

## CIDEON Conversion Engine for SAP Generating neutral and exchange formats with stamps

Automatic generation of neutral and exchange formats using SAP

To ensure access of documents, drawings, 3-D-Views and CAD models with current status information for everyone throughout an organisation, these have to be subjected to a conversion to neutral and exchange formats. **Cideon Conversion Engine for SAP** is the optimal solution to do that.

The process is completely monitored by the **CIDEON Conversion Control Center (CCC)** for SAP PLM. The **Conversion Control Framework** discharges the SAP job system so that this can be used for standard SAP procedures.

The CCC Clients control the various applications and CAD converters for producing neutral formats.

*Neutral formats* accompany the product life cycle. They are used to structure digital archives and support the distribution of documents on paper or electronically through SAP PLM Output Management systems such as CIDEON Output Management Solution. Neutral formats containing release notes can be made available to staff throughout a company as well as to vendors and customers.

Required *exchange formats* are available for being processed in other CAD systems or applications.

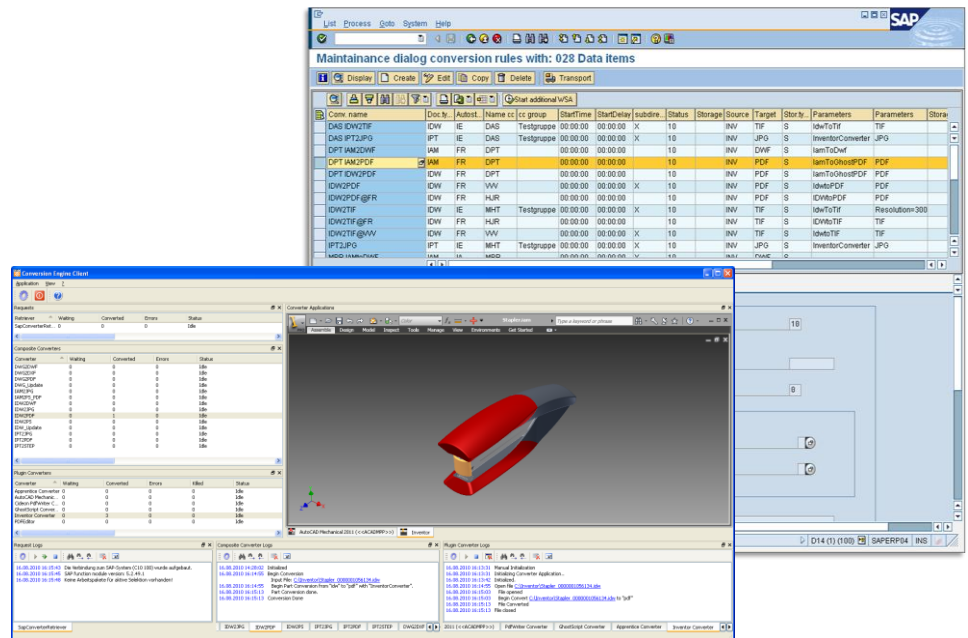


Fig.: CIDEON Conversion Engine for SAP

A conversion job is initiated through a defined primary status change in DMS or another optional commissioning procedure.

Through the conversion client the CIDEON Conversion Control Center organizes the Download of the application or CAD files from the appropriate SAP content server. This serves to control the conversion in the neutral or exchange format on the basis of the original application (e.g. MS-Office, Autodesk AutoCAD / Inventor, SolidWorks, Solid Edge, Catia V5, Pro/Engineer - Wildfire, UG, etc.) – including title block update with data from SAP system, like DMS or other sources. Additionally, the neutral format can also be

stamped e.g. with additional data from the classification or the corresponding material master.

After the conversion has been carried out, the neutral format or the exchange format file will additionally be attached to the DIR of the application or the CAD original and stored in the appropriate content server.

The conversion jobs are processed and recorded in the order in which they arrive (FIFO). Restart functionalities are included. The processing can be performed time or resource controlled. The architecture of the Conversion Engine framework covers scalability and high availability.

## Functions of the CIDEON Conversion Engine

### Functions

- Automatic creation of neutral and exchange formats
- Complete overview about all necessary information for conversion
- Collecting and administrating the conversion transactions
- Flexible starting conditions for the conversion e.g. triggered by a status change, by an SAP report etc.
- Attaching of multi page neutral format on the DIR of the original
- Stamping of the neutral formats with SAP properties f.e. from material master
- Update of title block for CAD drawings
- Automatic checking in and out in/from the content server
- Conversion of SolidWorks configurations into individual files
- Comment and Markup support for Word documents
- Support for distributed standard parts libraries
- Support for custom SolidWorks script execution during conversion

## Technical Features

- Fast, reliable and flexible scalable
- No modification in the SAP system
- Integration of new converters possible via API interface
- Multiple conversions with one single document download from SAP
- Stamping of the neutral formats while providing additional SAP data, e.g. from material master, classification, etc.
- Active registration of the converter client to SAP - restart functionalities
- Monitoring and reporting systems for the Administrator

## Available Converter

### Source formats for optional application servers

- AutoCAD-, AutoCAD Mechanical (DWG Files), AutoCAD Mechanical Desktop (DWG Files), Autodesk Inventor (IDW / IPT / IAM Files), CATIA V5, ME 10, MicroStation, Pro/Engineer, Solid Edge, Solid Edge ST3, SolidWorks, UGS, CoralDraw, MS Office 2010, MS Project, MS Internet Explorer, MS Outlook, Visio, Right Hemisphere Deep Server

### Reporting

- Status report of the converter
- Key data of the Document Info Record, the original and the neutral file
- Status of the checking in procedure in the content server



### Target formats (dependent on the CAD system or through optional filters)

#### Neutral formats:

- PDF, PDF/A \* \*\*
- HP-GL/2, JPEG
- TIFF/G4\*
- PostScript

\* supports stamping of SAP properties \*\* support of digital signature

#### Exchange formats

- DWF, DXF
- JT, IGES, STEP, STL, VRML
- Streamline
- Right Hemisphere

Please contact us for more information on other solutions

#### CIDEON Output Management

Companywide plot- and output management for SAP PLM and SAP DMS

#### CIDEON Import PDM

Import of documents in SAP DMS or PDM systems

#### CIDEON Export from SAP CAD Desktop

CAD Collaboration for SAP PLM

#### SAP PLM Integration for AutoCAD, Inventor,

MicroStation, Solid Edge and SolidWorks

Administration of CAD with SAP

#### CIDEON AutoCAD Integration for EAM / RE with SAP

Technical asset- and plant management based on AutoCAD and MicroStation

Date of issue: August 2011

