

CIDEON Output Management for SAP Module: Production order

Modern production and output

Thesis: „Modern production requires more than just conventional printing functionalities.“

It is becoming increasingly evident that relevant information must now become available anywhere and anytime as well as at any stage of its preparation.

This requirement can only be fulfilled by an output management - / Plotmanagement system. This of course applies especially to the production area.

Here the production order and the related output requirements play a central role.

A production order in the sense of SAP requires not only the design drawings themselves but also standard SAP output such as piece lists, wage tax cards, payroll slips, reply certificates, stock removal slips, etc.

This means that both the large-format output of design documents as well as the small-format standard output of output management must be processed.

Printing of production-relevant documents

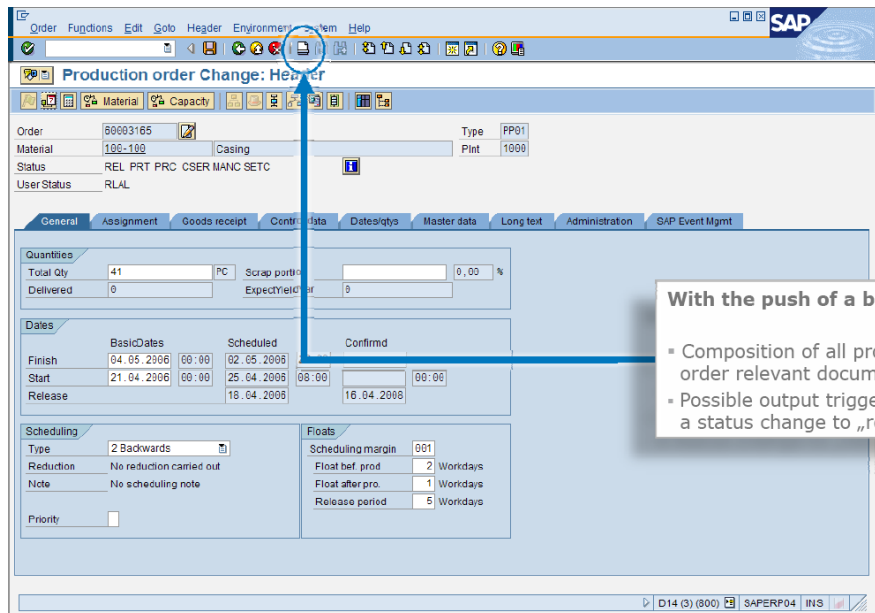


Fig.: CIDEON Output Management integrated into the standard SAP output of production relevant documents

This inevitably leads to a demand for an integration of all of these outputs to save time and money and to increase their usefulness as an added value for the user. The main point here is the need for a complete integration and output of all documents relating to a production order.

All of this must of course be available in a configurable sequence and include additional information, for example the application of order numbers as watermark stamps.

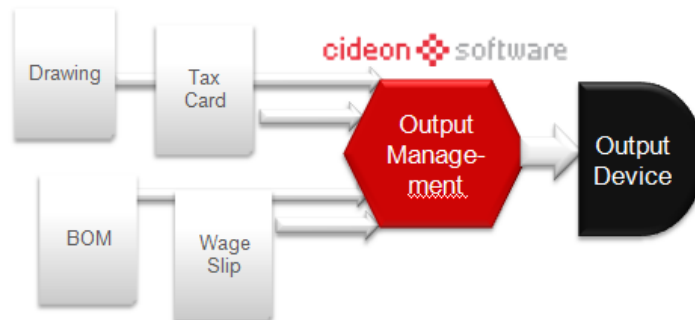
In the end this means that a staff member will only have to pick up or receive from the distribution department a completely generated pack of production documents issued from the output equipment after the production order has been released or the printing output for the production order (CO04 / CO04N) has been activated.

This means that a time-consuming sorting and compiling of the individual documents is no longer necessary.

Functional overview CIDEON Output Management production order module

List	List Name
LF01	PRT overview
LG01	Object list
LG02	Op. control ticket
LG03	Job Ticket
LG04	Kanban ticket
LK01	Pick list
LK02	Goods issue slip
LK03	Goods receipt list
LP01	
LP02	
LV01	Time ticket
LV02	Confirmation slip
LV03	Document links
LV04	Operation Splitting

- **Plotting the production-relevant documents**
 - o design drawings
 - o standard SAP output
 - wage tax cards
 - payroll slips, etc.
- **Integration in the standard printout / Standard Customizing**
 - o CO04 / CO04n
- **Output of the documents**
 - o as an integrated output job
 - o in a correct sequence
 - o in a correct format
 - o Provided with additional information
 - watermark stamp
 - stamp with optional SAP meta data
 - logo
 - digital signature
 - information, etc.
- **Integration in CIDEON PreProcessor for SAP**
 - o additional modules available
 - o printout of maintenance-relevant documents (IH, CS)
 - o output services:
 - order requirements (BANF)
 - delivery plan
 - customer inquiry
 - customer offer
 - order
 - functional location
 - Equipment
- **Interface for individual activation / integration available**
 - o opportunities for customized adaptations through existing Business API



Are you interested in other solutions?

CIDEON Conversion Engine for SAP PLM
The automatic generation of neutral-, web- and exchange formats using SAP® -DMS

CIDEON Import PDM
Import of data (CAD, Office...) in SAP

CIDEON Collaboration
Export of CAD data from SAP CAD Desktop

SAP PLM Integration for AutoCAD, Inventor, MicroStation, Solid Edge and SolidWorks
Direct integration of CAD data in SAP DVS

CIDEON CAFM Suite
Graphic facility management based on AutoCAD/MicroStation and SAP RE/PM

CIDEON CAD Migrator for SAP PLM
Automatic Release-Migration of CAD data

Date of issue: August 2011