



MANAGING MASTER KEY SYSTEMS IN SAP ERP

A project which was successfully completed in only three weeks

A project which was successfully completed in only three weeks

ixetic is a well known partner and supplier to all important car and commercial vehicle manufacturers. The company also operates production sites in Hückeswagen and Bad Homburg, Germany as well as in Brunswick, U.S.A. and Yokohama, Japan.

The company introduced SAP ERP in the years 2007 and 2008 when it replaced the previous ERP system which was based on AS/400. ixetic was able to achieve a high degree of uniformity in its system landscape by mapping a large part of its business processes on the SAP platform.

Integrated smoothly into the new SAP

The former AS/400 software also contained an individual program for managing the key systems of the two plants at the Hückeswagen site.

With the replacement of the AS/400 software a new solution had to be found which would meet the previous requirements and which would also be able to be integrated smoothly into the new SAP system landscape. Here processes such as personnel administration, materials management and control and purchasing which also affect the key management topic are being mapped in SAP ERP.



Assembly plant Hückeswagen 2009

ixetic discovered CIDEON Software's CAFM Suite and the Key Manager, which is part of this solution by a recommendation.

The company decided to use Key Manager since this is a standard software which was designed as an AddOn to SAP ERP therefore making it easy to integrate into SAP applications and processes. In addition, extra interfaces between SAP and an external key management system are not required.

A special challenge

A one day workshop was held in the middle of June to assess the current situation and the requirements of a new system. Here it was established that the data of the two key systems with a total of approx. 1,300 keys and the movement data from the former system had to be migrated.

A special challenge was the fact that the data inventory had to be adjusted and matched to the key plans. The key plans had previously been maintained by the suppliers of the key systems while in the former system the key and lock cylinder data had been administrated separately by ixetic. This separate administration of data had led to discrepancies in the past.

In addition, the time allowed for the introduction of the new system was quite ambitious since it was planned that the personnel data of the former system would no longer be maintained as from the end of July with the Key Manager being put into operation no later than the middle of August. During this time a concept was prepared for implementing the new system and migrating the data. With the help of the SAP tools all of the former data was migrated for the data acceptance, forms were adapted, staff was trained and the productive phase was begun.

The migration was carried out in two parts. First the data of the key system with the keys, doors and cylinders was migrated since this had not changed during the course of the project.

The movement data concerning the issued and defective keys was migrated just before the actual start of the productive phase.

A lot has now changed for the users. Through the high degree of integration, all the issuing and return procedures are now much more transparent and reliable. All inventory changes are clearly recorded since a docket and a booking are now prepared for each key movement. The dockets are being issued using a standard form based on SAP Smart Forms.

The key plan integrated in the system prevents any inconsistencies from arising between the master data of the key systems and the daily movement data.

In addition, it is now easier to search for information. For example, the following questions can now be answered:

- Which key did or does a person have at a specific point in time?
- Who can open a specific door?
- Which doors can be locked by a specific key?
- How many copies of a key should be located in the key cabinet?

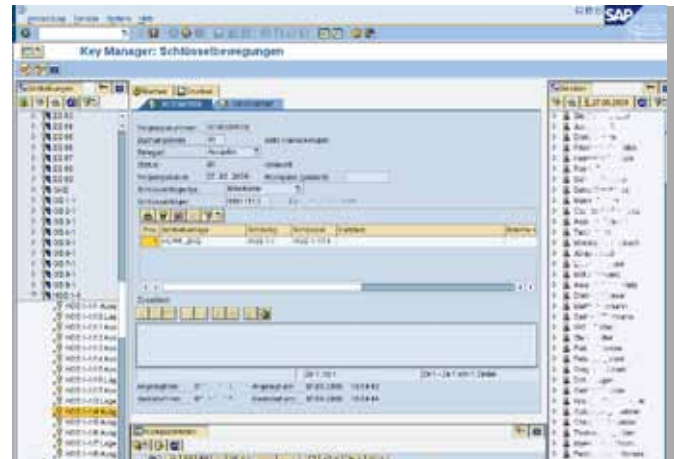
According to Ursula Mayer, *“The best thing is the CIDEON Drag & Drop functionality of the SAP user interface which allows installing lock cylinders into doors very efficient. The return of the keys can now be monitored better and it is easier to trace keys. The system also has a safer transaction basis and inconsistencies can no longer occur in the administration.”*

Also, the lock cylinders of the key system can now be installed in the doors using the Drag & Drop functionality.

Quickly and effective

The procurement of keys and lock cylinders has also been completely integrated in the SAP materials management and control system. ixetic can therefore now carry out its procurement transactions more quickly and effectively.

The project including the commissioning and the instruction of the users was carried out at the site in Hückeswagen, Germany in only three weeks. A similar introduction of the Key Manager system has already been scheduled for the next site in Bad Homburg.



Issuing docket

ixetic

Precision to move

ixetic GmbH

The company ixetic manufactures hydraulic systems as well as hydraulic and vacuum pumps for vehicles and climate compressors for the automotive industry. The company employs a total of 1,200 people and prides itself in its top standards in technology, quality and delivery service. ixetic supplies numerous renowned automobile and utility vehicle manufacturers. The company is setting new standards in terms of technology, quality and delivery services throughout the world.

