



FIRST CLASS ENGINEERING

Project Management – Planning and Controlling of projects

Company

About us

- Team with more than 110 employees at the locations **Basel**, **Bautzen**, **Chemnitz**, **Essen** and **Leipzig**
- More than **25 years** of market presence and specialisation in the rail vehicle sector
- Ensuring highest expertise in the redevelopment, modernisation or conversion of rail vehicles



Company

Brief summary

1992

ESTABLISHMENT
IKB Ingenieur- und
Konstruktionsbüro
GmbH

2001

ACCREDITATION
Surveyors &
Welding Company

2008

OPENING
Basel branch

2003

OPENING of
branch
Chemnitz

2013

INTEGRATION
in Friedhelm
Loh Group

1990

1995

ISO 9001
CERTIFICATION

2002

RENAMING
to CIDEON Engineering
GmbH

2008

OPENING of
Leipzig branch

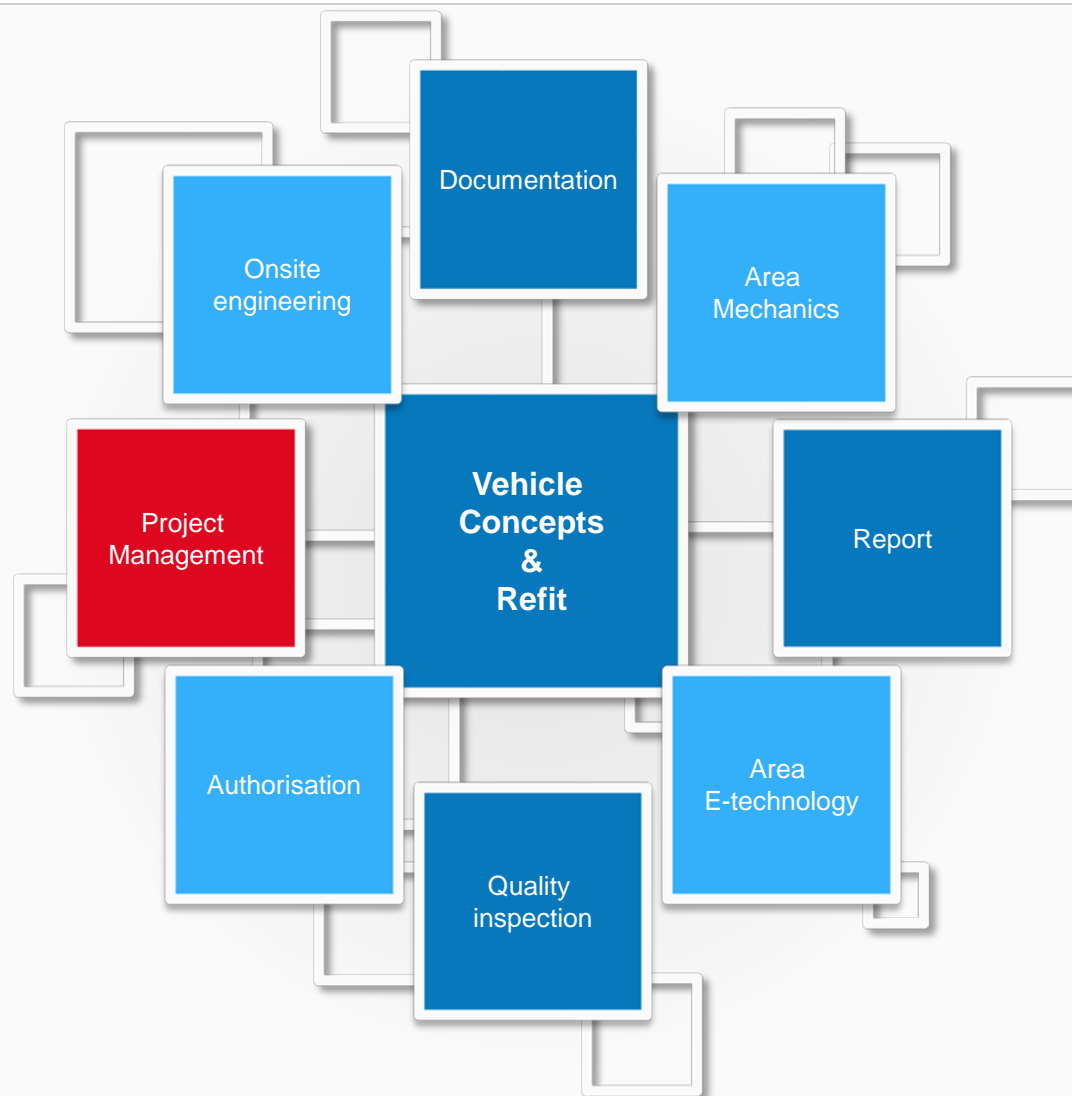
2016

INTEGRATION
in CRCCE

2020

Services

Overview

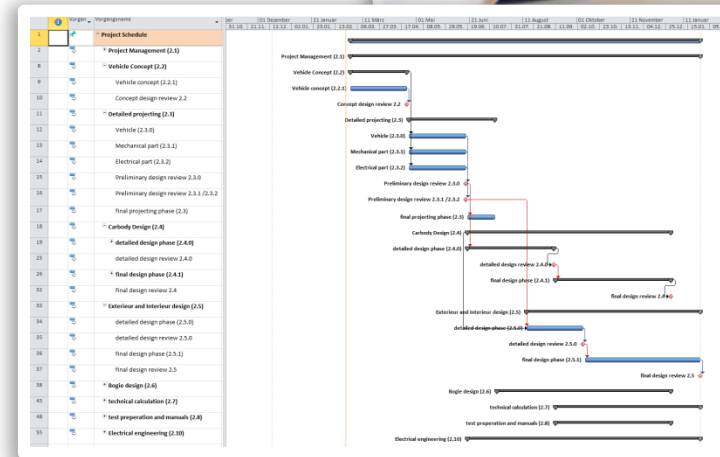
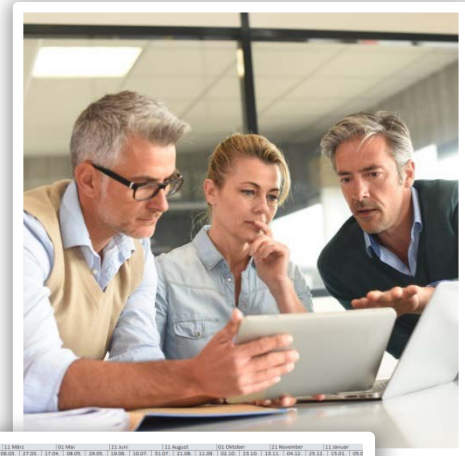


Project Management

Overview of tasks

- Project management and project coordination
 - Organising and managing meetings
 - Performing reviews (milestone reviews, gate reviews)
- Deadline scheduling and monitoring
- Cost control
- Interface to the customer

- Created from:
 - Project Flowcharts (Gantt Charts)
 - Budget plans
 - Forecasts
 - KPIs (e.g. earned value)



References

Project: RailLab measuring train 3 | Customer: DB Netz AG

Requirements

- Overall project management of all contracted trades

Customer benefits

- Complete processing under one roof
- Use of the know-how of CE (FEM, approval, etc.)

Implementation

- Preparing and conducting project meetings
- Monitoring costs, dates and quality
- Status comparison and integration of new tasks into the flowchart
- Reporting to the Steering Committee



Photo: Deutsche Bahn AG / Claus Weber

References

Project: Straddled Monorail | Customer: CRRC ZELC (CRRC Zhuzhou Electric Locomotive Corp. Ltd.)

Requirements

- Initial Monorail project with Chinese manufacturer
- Overall project management

Customer benefits

- Combining current technology with the latest design
- Meeting high customer demands while taking into account quality, costs and deadlines

Implementation

- Project planning and management
- Selection of components in accordance with supplier industry, taking into account customer requirements for interior and exterior, including design and drives



References

Project: Suspended Monorail | Customer: CRRC ZELC (CRRC Zhuzhou Electric Locomotive Corp. Ltd.)

Requirements

- Overall project management
- High synergy with the project Straddled Monorail

Customer benefits

- Combining current technology with the latest design
- Meeting high customer demands while taking into account quality, costs and deadlines

Implementation

- Project planning and management
- Selection of components in accordance with supplier industry, taking into account customer requirements for interior and exterior, including design and drives



References

Project: Rail milling machine | Customer: CRCCE (CRCC High-Tech Equipment Corp. Ltd.)

Requirements



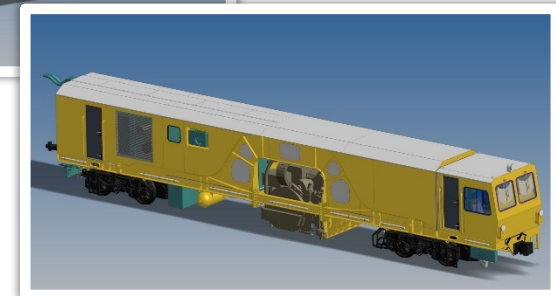
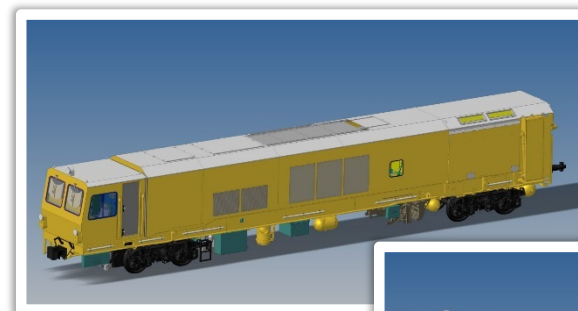
- Initial project of a maintenance vehicle for the Chinese market
- Overall project management for 3 rail milling machines (Kunming, Beijing, Shanghai)
- Design and construction of the vehicle, taking into account the equipment to be integrated

Customer benefits

- Consideration of country-specific conditions for the design and operation of maintenance vehicles
- Meeting customer demands, taking into account quality, costs and deadlines

Implementation

- Project planning and management
- Selection of components in accordance with supplier industry, taking into account customer requirements for interior and exterior, including design and drives (TDG / LDG)
- Coordination of the project milestones, the technical and contractual interfaces with the main suppliers



Thank you for your attention!



CE cideon engineering GmbH & Co. KG
Bautzen, Chemnitz, Essen, Leipzig - Deutschland

CE cideon engineering Schweiz AG
Basel - Schweiz